

NEW CONSTRUCTION FOR LEASE
Secure Basement Storage Space
10,000 +/- SQ. FT. Divisible
3711 Soquel Dr., Soquel
\$1.00 psf Gross



- **New Construction**
- **Elevator Served**
- **Basement Climate Ideal for Wine Storage**
- **Convenient Mid-County Location with easy access to Highway One and 41st Ave.**
- **Contiguous to 102,000 sq. ft. Store More America**
- **Receiving, Loading, and Pallet Service Included!**

For More Information, Contact Exclusive Brokers

CHRIS SHOEMAKER OR
(831) 476-8194 x 34
chris@hirschandassociates.com

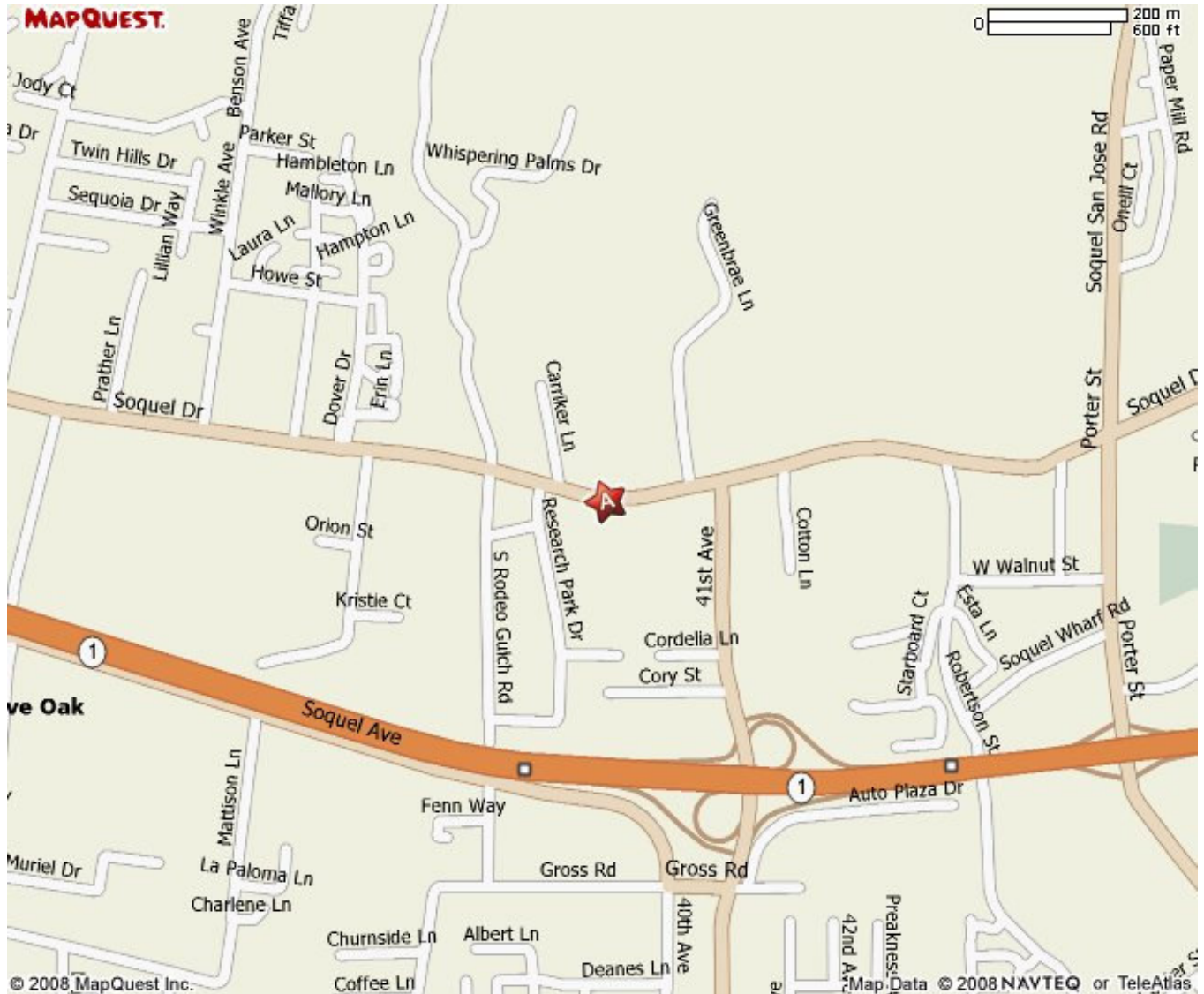
RON HIRSCH
(831) 476-8194 x 36
rhirsch@hirschandassociates.com



Hirsch and Associates
Investment Real Estate Brokers: Sales & Leasing
4375 Capitola Road Capitola, CA 95010
www.hirschandassociates.com

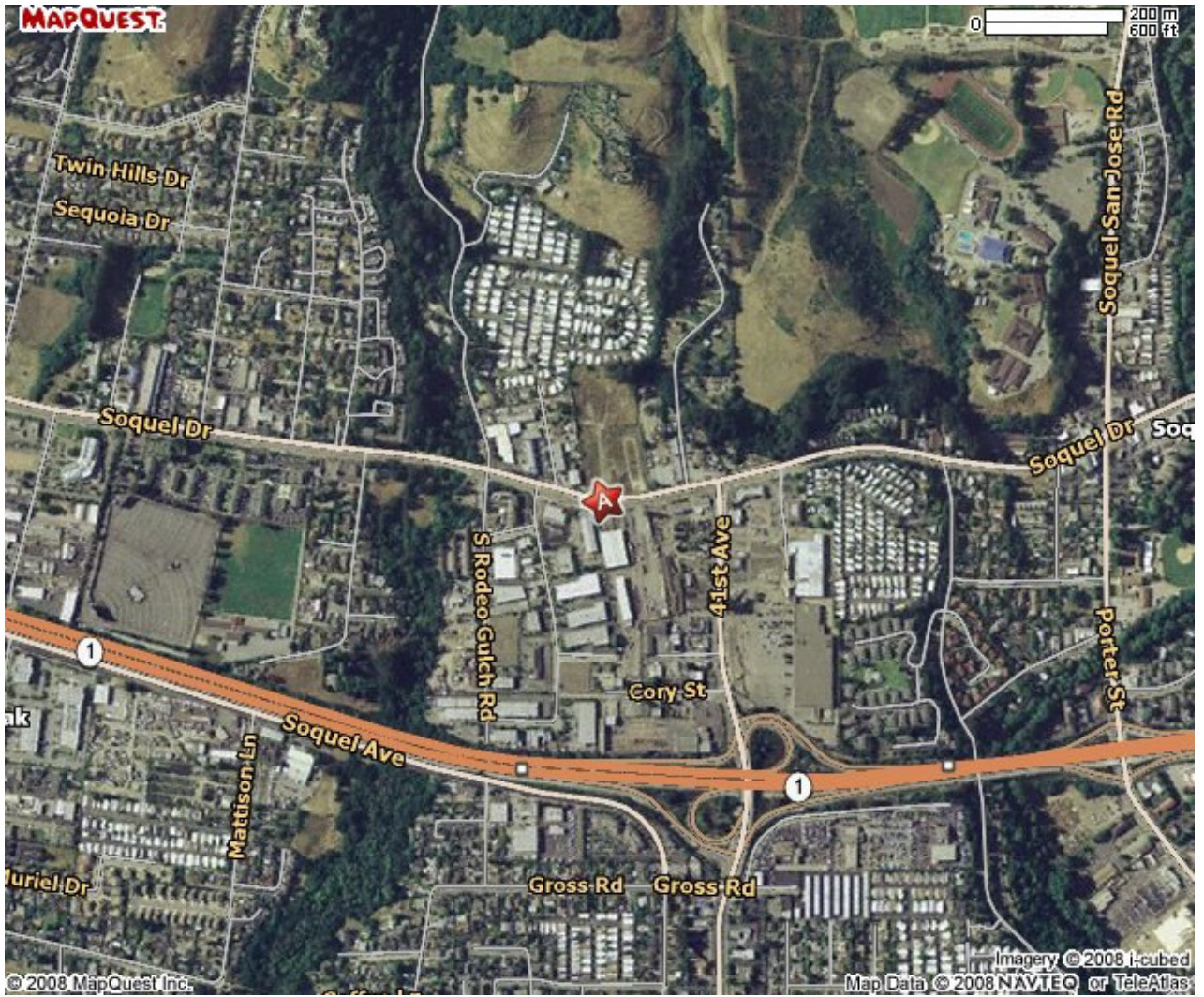
Information presented in this flyer was provided by the Owner. Hirsch and Associates makes no representation as to the accuracy of the information. Tenant/Buyer should use due diligence in investigating the feasibility of entering into a lease or purchase of this property by relying on his own professional advisors.

LOCATION MAP



Information presented in this flyer was provided by the Owner. Hirsch and Associates makes no representation as to the accuracy of the information. Tenant/Buyer should use due diligence in investigating the feasibility of entering into a lease or purchase of this property by relying on his own professional advisors.

AERIAL PHOTOGRAPH



Information presented in this flyer was provided by the Owner. Hirsch and Associates makes no representation as to the accuracy of the information. Tenant/Buyer should use due diligence in investigating the feasibility of entering into a lease or purchase of this property by relying on his own professional advisors.